



Tailored Learning:



Defining and Identifying
Personalized Success for
North Carolina's Students

WELCOME TO THE LAB!

March 23, 2026

SAS Institute | Cary, NC

Building the Foundation for Tailored Learning: Structures, Culture, and Policy Alignment

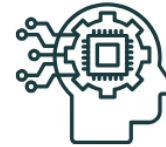
Rupen Fofaria | Director of Board Operations & Policy | NC State Board of Education

Kayla Siler | CBE Partnership | Research Triangle Institute

Angela Whitford-Narine | CEO | Second Mile Education Schools

Rachel Wright Junio | Golden Leaf Project Lead | NC DPI

CBE Mastery Framework



| STRUCTURE | CULTURE | TEACHING | LEARNING |
|------------------------------------|--------------------------|----------------------------------|-------------------------------|
| Assessment System | Institutional Mission | Teachers as Facilitators/Coaches | Student Ownership of Learning |
| Seat Time | Knowledgeable Staff | Personalized Learning | Student Voice |
| Learning Management System | Culture of Innovation | Tools/Resources for Teaching | Lead Learner |
| Scheduling | Engaged Parents/Families | Content Expertise | Learning Anytime, Anywhere |
| Standards/ Defined Competencies | Engaged Stakeholders | Curriculum Design | |
| Professional Development | Effective Communications | Assessment Design and Use | |
| Physcail Infrastructure | Culture of Relevance | | |

Building the Foundation for Tailored Learning: Structures, Culture, and Policy Alignment

Rupen Fofaria | Director of Board Operations & Policy | NC SBE

Kayla Siler | CBE Partnership | Research Triangle Institute

Angela Whitford-Narine | CEO | Second Mile Education Schools

Rachel Wright Junio | Golden Leaf Project Lead | NC DPI



Tailored Learning:



Defining and Identifying
Personalized Success for
North Carolina's Students

WELCOME TO THE LAB!

March 23, 2026

SAS Institute | Cary, NC